

# Leadspace MAPs

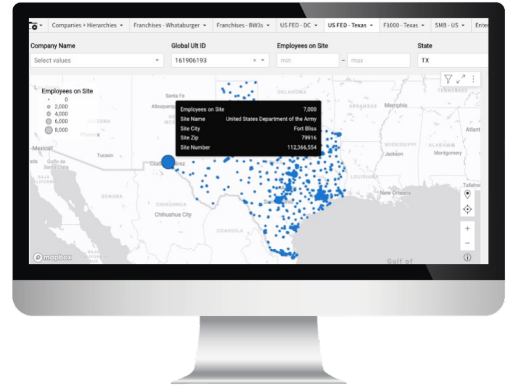


Quick-start **Market Activation Packs**. Unlimited marketing exploration.

Leadspace B2B Market Activation Packs (MAPs) is the industry's first visual profiling tool to explore, map and activate 360-degree slices of the most popular territory/audience segments.

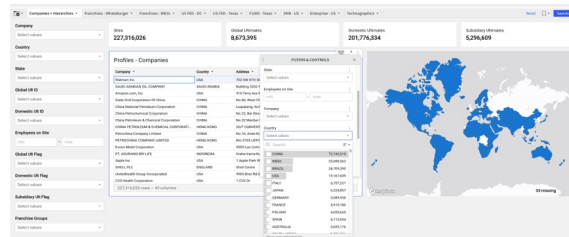
B2B MAPs gives you **dynamic and unified** buyer profiles for companies with (or without) people and buying groups so you can easily visualize and explore territories, identify decision-makers, and convert whitespace by targeting accounts and personas with the highest potential.

- ✓ 30+ sources. 230M+ companies. 700M+ people.
- ✓ Annual subscriptions – enriched, deduped and updated quarterly.
- ✓ Get 50K, 100K or 500K account packs.



## Corporate Families Pack

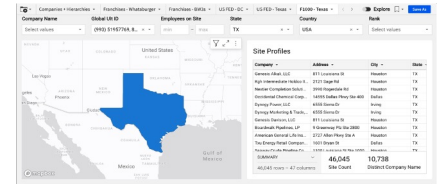
A fast fix for an unproductive CRM. Get a jump on 2025 territory planning or fast relief on CRM routing errors. Dedupe, enrich and optimize your CRM. Visualize and explore 8M+ complex hierarchies. Organize your territories/TAM in a few easy steps for improved sizing/routing.



- ✓ Single Sites
- ✓ Parent/Child
- ✓ DU/GU
- ✓ HQ/Subsidiaries

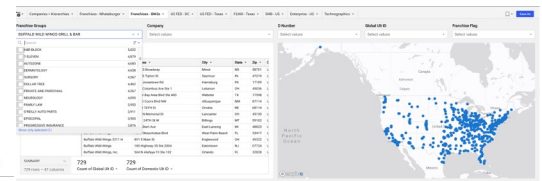
## Fortune 1000 Pack

You know the companies, but do you understand their subsidiaries and hierarchies? Gain visibility into the 600K+ sites and 21M+ contacts within the Fortune 1000 companies, 1.5M+ of which are director-level or above.



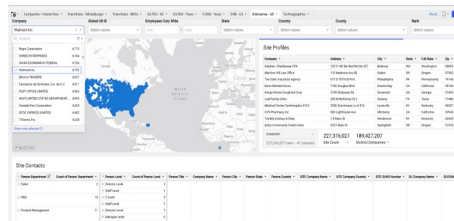
## U.S. Franchises Pack

Penetrate the \$890B market of 3,000+ franchises for scaling land / expand. Know your opportunities.



## Enterprise Pack

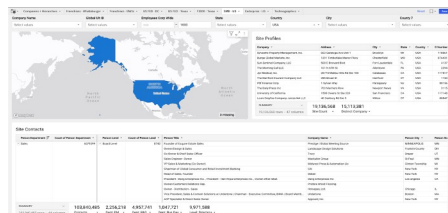
Visualize and target 10M+ U.S. sites from 2.6M+ global companies with more than 1,000 employees.



- ✓ 83K individual companies
- ✓ 480K company sites

## SMB Pack

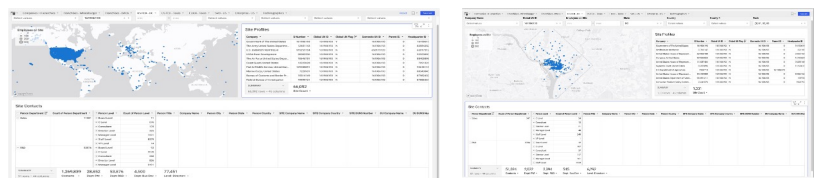
Visualize and target 18M+ U.S. sites from global companies with less than 1000 employees.



- ✓ 15M unique companies
- ✓ 104M contacts
- ✓ 16.5M entities available
- ✓ 35M employees

## U.S. Federal Government Pack

Explore 66,000+ entities of the U.S. Federal Government and understand ranks, hierarchies, revenue, employees, and more.



**Custom MAPs Available!**

info@leadspace.com | (855) 532-3772